

INSTALLATION, USE AND CARE INSTRUCTIONS



250mm VENTILATING DUCTED ROUND EXHAUST FAN

Model : HVEF250RW , HVEF250RS



Please read all instructions before commencing installation.

This unit is fitted with a cord and plug, however, any interconnecting wiring and switches used or use of another cord and plug must be fitted by a licensed Electrician.

The main supply and interconnecting cables required for installation of this appliance are not included, suitable cabling no lighter than ordinary duty cable rated at a minimum 10 Amp load rating is to be used when installing /wiring this appliance.

WARNING

1. Use this unit only as described in this manual. Any other use not recommended by the manufacturer may cause fire, electric shock, or injury to person. If you have questions, contact the manufacture or local agent.
2. All wiring must be carried out by a Licensed Electrician in accordance with all applicable National / local codes and standards. Also check with the local council regulations regarding installation of exhaust fans.
3. Make sure the power is off before the installation.
4. When cutting into the wall, do not damage electrical wiring and other hidden utilities.
5. The unit must be properly grounded.
6. For the purpose of avoiding any dangerous gas leaking into your bathroom, the ventiduct of the unit must not be laid together with the ventiduct of air-fueled water heater or other open-fire appliances into the same flue.
7. The unit must be isolated from the power by means of a plug or all-pole disconnection switch with a contact separation of at least 3mm in each pole.
8. The power cable must stand a minimum 10A load.
9. Close supervision is necessary when the appliance is used by or near children and invalids. Do not allow children to use it as a toy.

IMPORTANT CONSIDERATIONS BEFORE INSTALLING

A few minutes planning can make a big difference to the installation time and also to your satisfaction with the function of the unit.

1. Generally the unit should be mounted outside the shower cubicle.
2. For the exhaust fan to work efficiently, replacement air of a volume equivalent to what is being, extracted must be able to enter the room, In general this air would be drawn under the door, or through a slightly open window. If the room is airtight, the fan will function poorly.
3. This product is designed for installation in flat ceilings only. Do not mount it on a sloping ceiling or a vertical wall.

4. Before commencing any cutting, check in the ceiling space that there are no obstructions such as ceiling joists and that there is sufficient height clearance for the housing. Check that the electrical wiring can be routed from the wall switches to the mounting location.

INSTALLATION

1) Cutting a vent (when required)

For installation where external venting is required or is your choice, locate a suitable location in either the roof or exterior wall to vent out the exhausted air / steam and cut out a 105mm hole. Cut out Ø105mm vent hole on the wall (Figure C) .

2) Ducting

Put one end of a 100mm diameter ventiduct into the vent hole and fixed with a cable-tie (Figure A) put one Another end of ventiduct into the exhaust fan air outlet and fixed it with the screws on the metal ring (Figure B). seal space around the hole using a suitable sealant and cawling where necessary. The Vent hole mark "UP ↑" this location upward installation on the wall. (Figure D)

3) Locating the unit

For the fan to work efficiently, from the fascia there should be about a 2.3m overall height to ground.

4) Prepare the ceiling

Using the template provided, mark the ceiling with a pencil outline and cut out a hole in the ceiling at the chosen area. Take care not to cut the hole bigger than the template.

Make sure a distance between the edges and wall is no less than 250mm.

Also from the rooftop there should be a minimum 300mm height to the ceiling. (Figure 2)

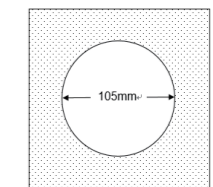
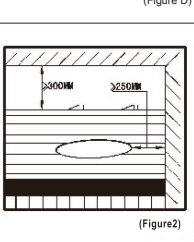
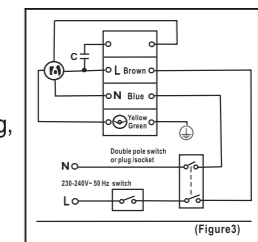
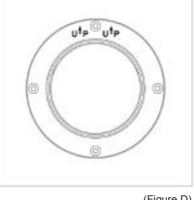
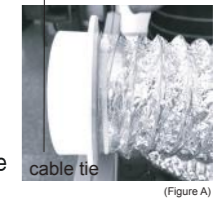
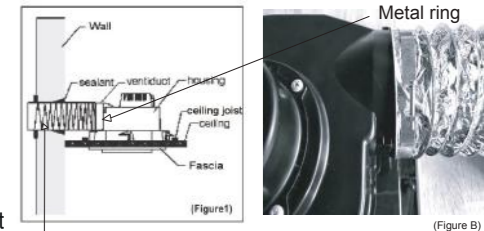
Ensure that the intended hole will have suitable room to locate the unit and will not foul on joists or not fit in the headroom provided.

5) Wiring (Ensure the power is turned off)

Please comply with the local wiring rule when wiring, the unit as per the wiring diagram. (Figure 3)

6) Remove the fascia

Pull the fascia a little, press the fastening springs backside, then remove the fascia.



BEFORE OPERATING THIS PRODUCT READ UNDERSTAND AND FOLLOW THESE INSTRUCTIONS.

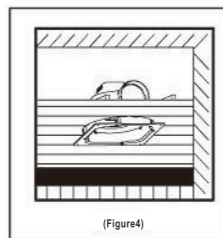
Save these instructions for future reference



This is a cut-out template card with size Ø290mm for the 250mm exhaust fan

7) Position the housing into the hole

Choose an optimal direction to put the housing into the hole in accordance with the position of fan outlet. Fit the in-house end of the duct to the fan outlet, then push the body of the unit into the hole in the ceiling, duct side first. (Figure 4)



Note: Try to keep the redundant wire away from the housing.

Note: The shortest, smooth surface ventiduct with the least elbows will provide optimum fan performance,

Please keep the ventiduct as straight as possible, (Figure 5)

Note: Assure the 4 bar clamps are positioned so the unit can be easily pushed into the hole in the ceiling.

Note: It is highly recommended that interconnected wire be laid into the wall beforehand for the purpose of keeping an integrated look in the bathroom,

8) Fasten the unit on the ceiling

Tightening the 4 screws by a screwdriver and then tighten the screws until bar clamp can clamp the ceiling tightly. (Figure 6)

9) Replace the Fascia

Put the two springs on the fascia into the two slots in the unit and push the fascia onto the fan body.

USE

1) power off the switch before plug the unit to the socket.

2) Turn on/off the switch button to make the unit run or stop.

3) Running the fan can exhaust odour and steam in a quick and efficient way.

Note: Shut off power quickly when any abnormalities occur in operation, Then call your local licensed electrician for inspection or necessary service work.

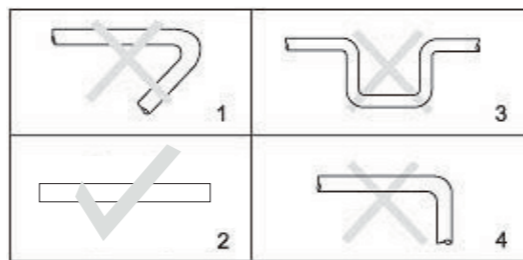
Note: It is absolutely prohibited to insert finger or thin bar to the fascia to avoid being injured or damaging the unit.

Note: The unit must not be installed at a place that suffers from severe water leakage.

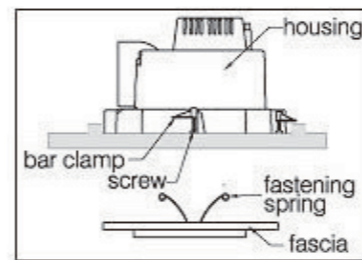
MAINTENANCE

1) Shut off power before cleaning or maintenance.

2) Wipe fascia with care using a soft cloth soaked with water or neutral detergent. Ensure the motor or other electrical parts can not touch the water.



(Figure 5)



(Figure 6)

Replaced the fascia after it is thoroughly dry.

WARRANTY

The HELLER Ceiling Exhaust Fan is warranted against defects in manufacturing and workmanship for a period of 12 Months. The warranty does not extend to installation of the unit or any associated wiring or any damage caused by installation or wiring.

The installation must be conducted by a licensed electrician and a suitable certificate of safety is to be issued by the electrician who installed the unit. Warranty claims will be voided unless a certificate of safety can be produced when required, prior to service or repair.

Please keep and present the original invoice to your service agent for warranty services.

This warranty does not cover damages or loss caused by:

- 1) Any consequential losses arising from incorrect installation or operation or maintenance of this product.
- 2) Any consequential losses arising from incorrect wiring of this product.
- 3) Any modifications or changes made to the unit, other than those recommended by the Manufacturer.



DISPOSAL: Do not dispose this product as unsorted municipal waste. Collection of such waste separately for special treatment is necessary.

Important Note

If the supply cord is damaged, it must be replaced by the manufacturer or its service agent or similar qualified person in order to avoid a hazard.



Using a round cardboard (enclosed in the single pack) as a template mark a mounting hole on the ceiling, then insert a pencil through the template at the 245mm (or 290mm) marking and scribe a circle.

This template will mark out a 245mm diameter hole for the 200mm fan and a 290mm diameter hole for the 250mm

CUSTOMER SERVICE

Australian Customer Service

GAF Control (Sales) Pty Ltd

P.O Box 19

Altona North Victoria 3025

Phone: 1300 659 489

Hours: 9am-5pm (EST) Mon-Fri

www.gafcontrol.com.au